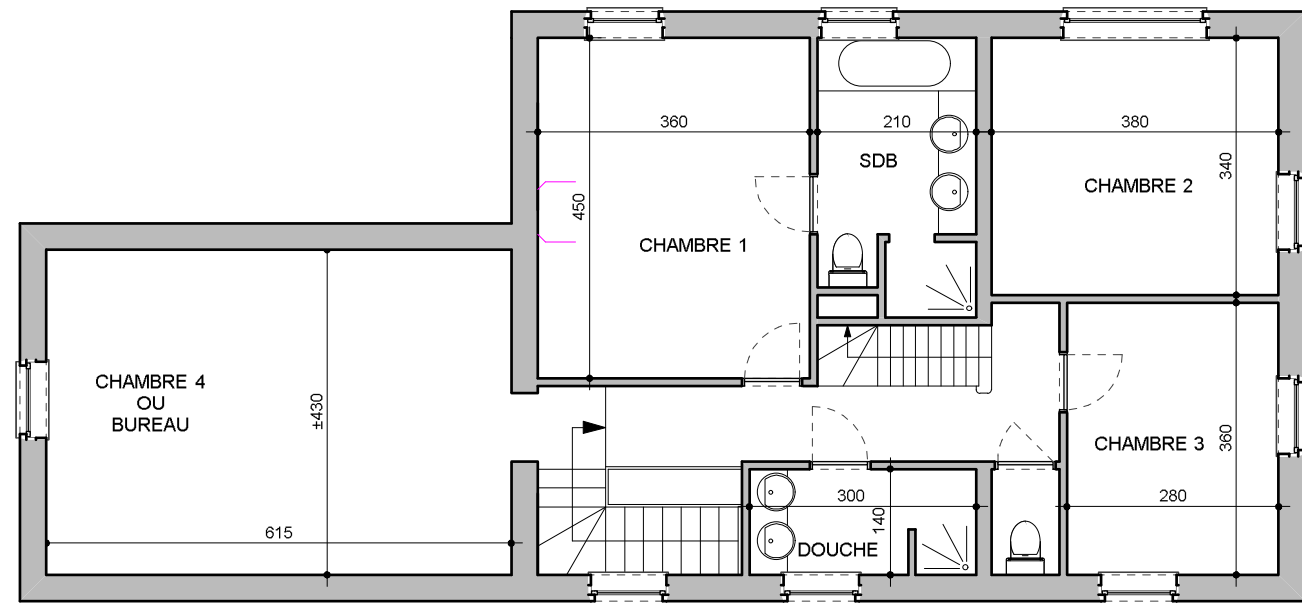
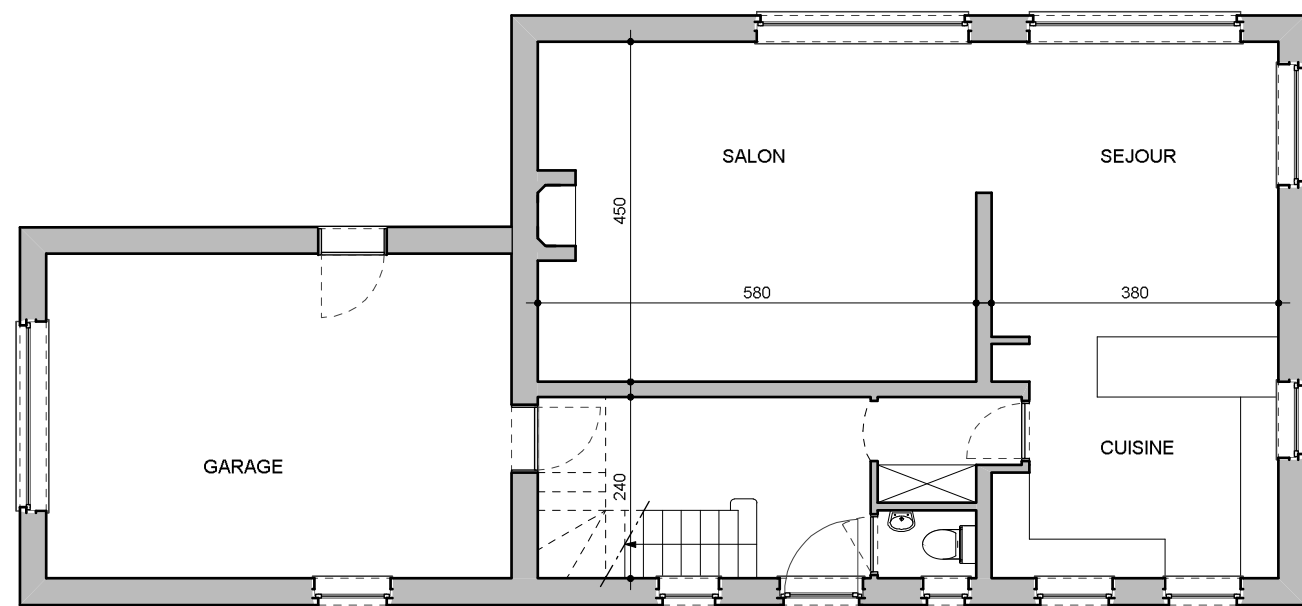


VUE EN IMPLANTATION  
Échelle : 1/250e

Avant projet du 30/10/19 pour la construction de deux habitations.  
Architectes : De Mullewie & Hoffait  
Les plans restent la propriété des architectes.



ETAGE MAISON 1

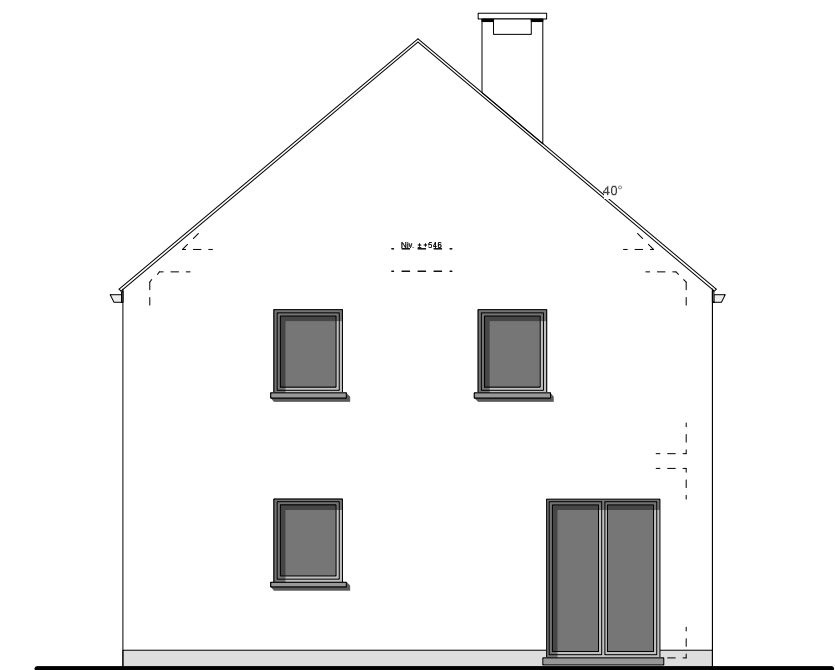


REZ DE CHAUSSEE MAISON 1

PLANS ELEVATIONS ET COUPE au 1/100



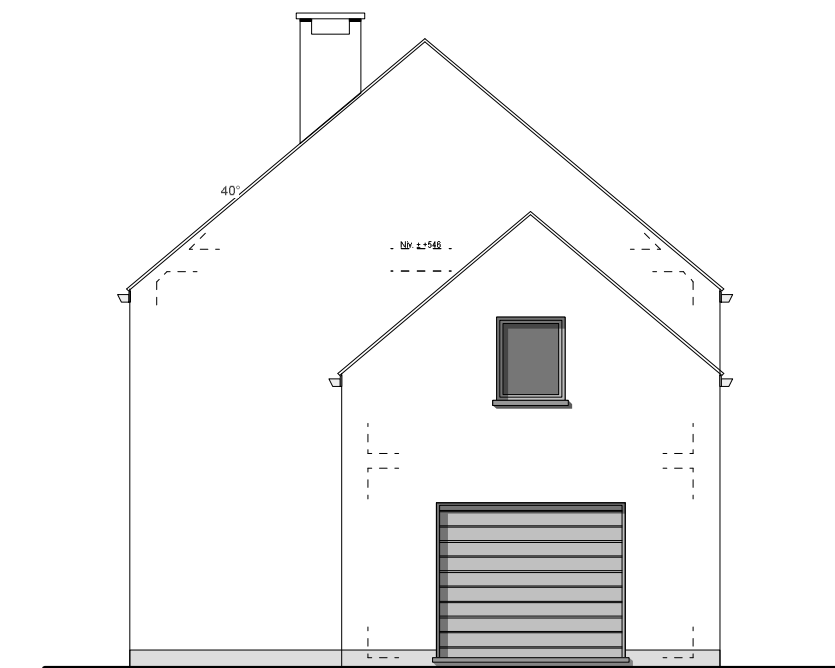
FACADE A RUE MAISON 1



FACADE DROITE MAISON 1



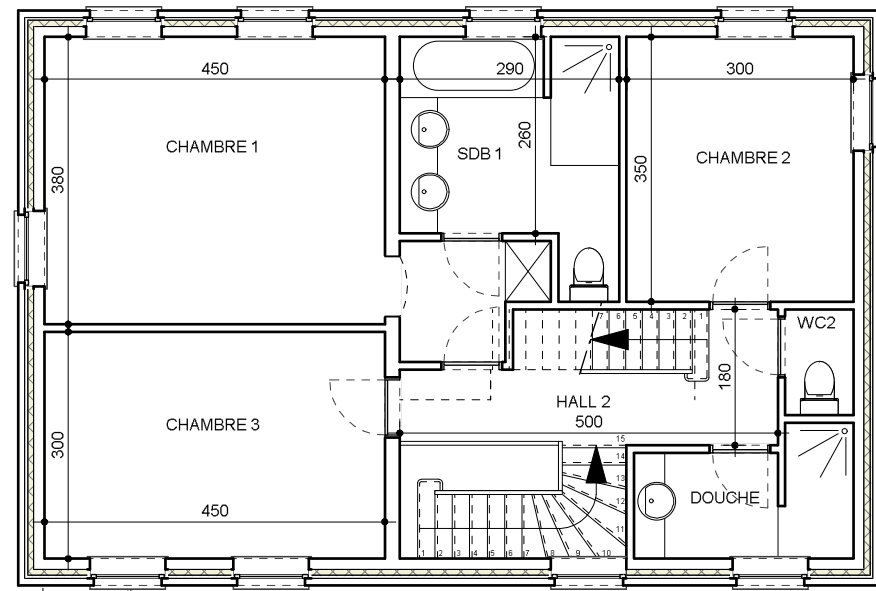
FACADE ARRIERE MAISON 1



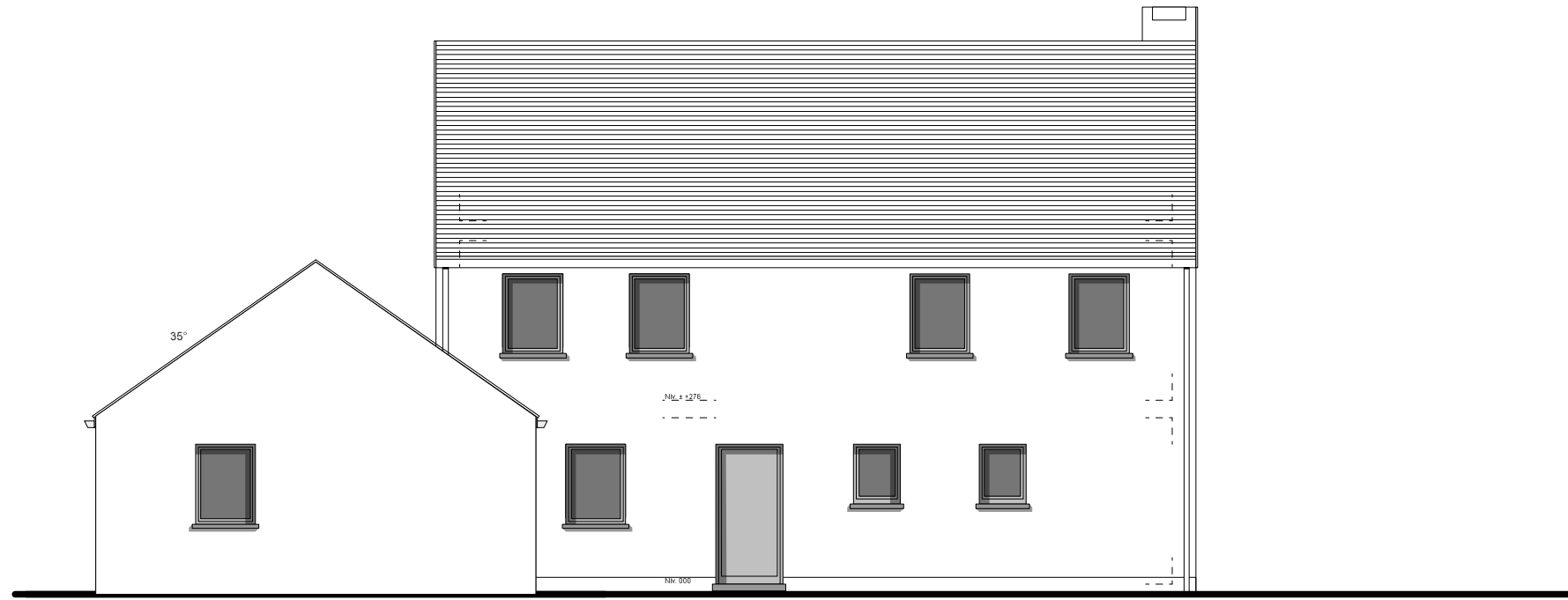
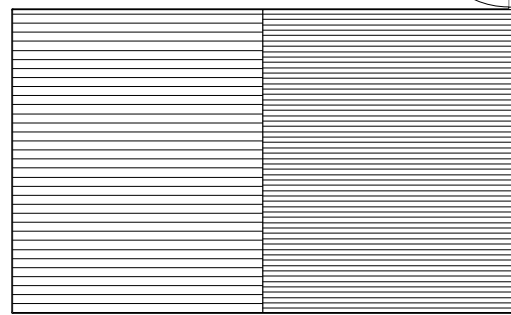
FACADE GAUCHE MAISON 1

M4B  
Avant projet du 31-10-2019

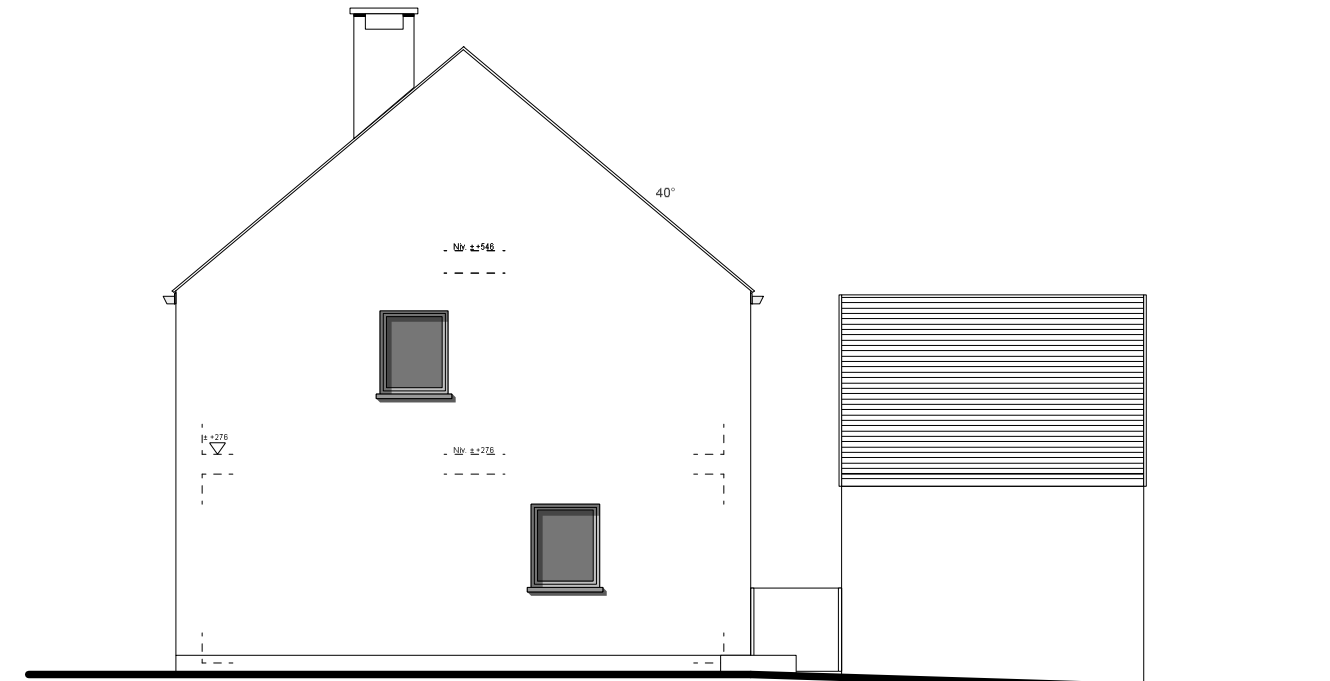
Architectes De Mullewie & Hoffait  
Les plans restent la propriété des architectes



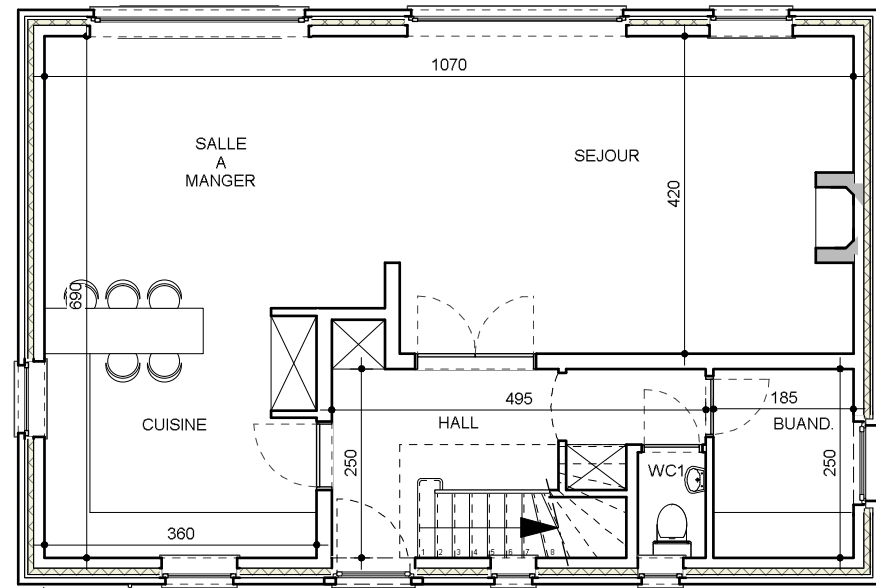
VUE EN PLAN ETAGE MAISON 2



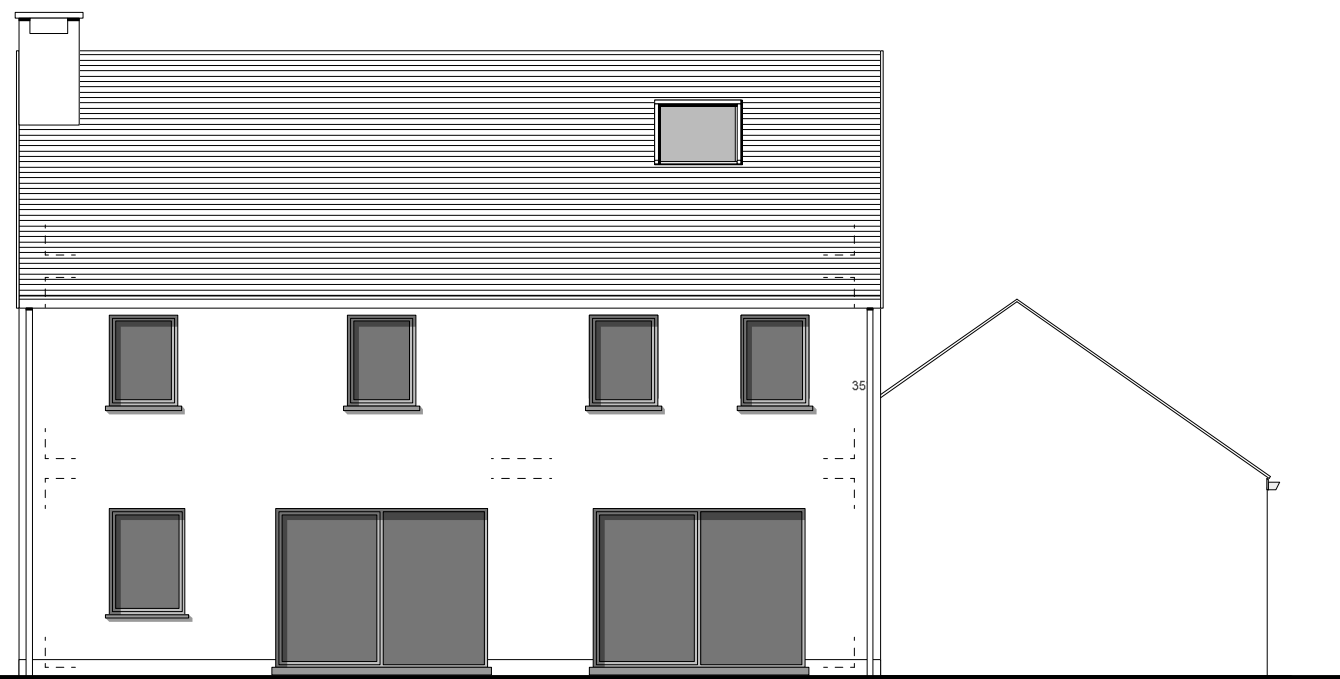
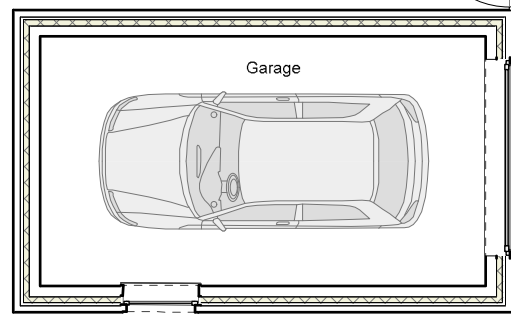
ELEVATION AVANT MAISON 2



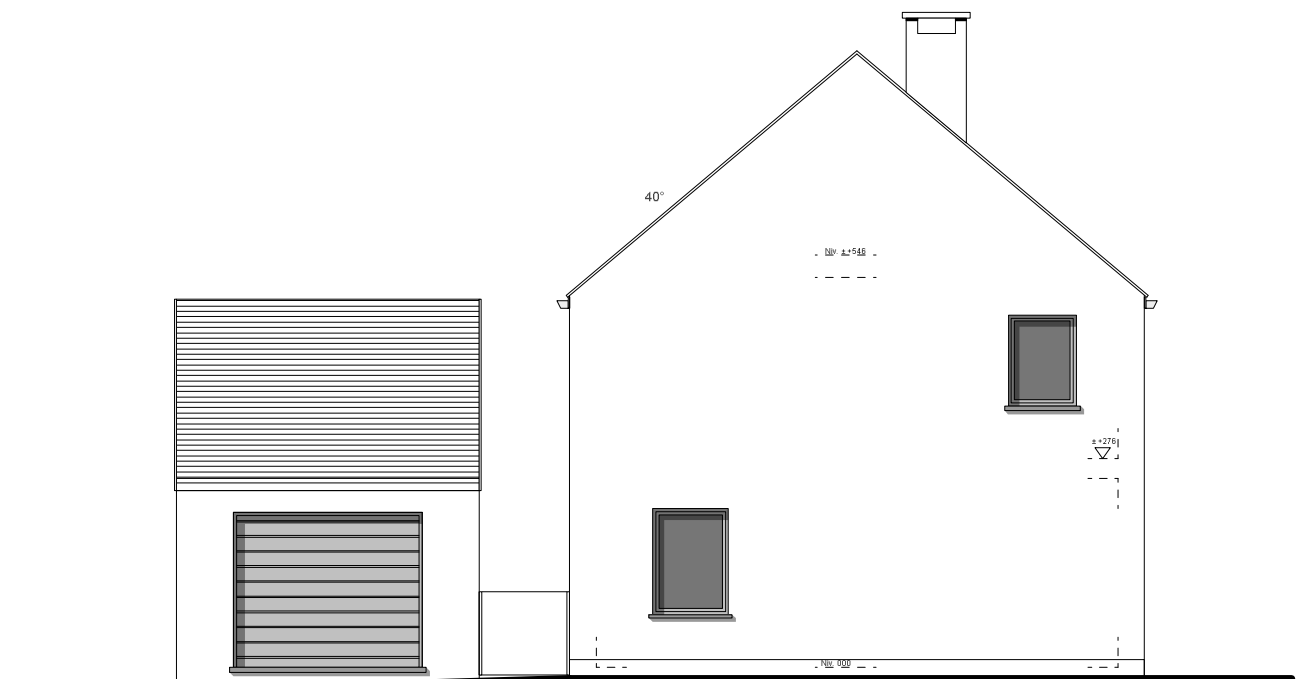
ELEVATION GAUCHE MAISON 2



VUE EN PLAN REZ DE CHAUSSEE MAISON 2



ELEVATION ARRIERE MAISON 2



ELEVATION DROITE MAISON 2

M4B Maison 2  
 Avant projet du 31-10-2019

Architectes De Mullewie & Hoffait  
 Les plans restent la propriété des architectes